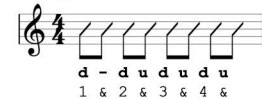


Ukulele Lady

By Gus Kahn

[F] I saw the splendor of the [F] moonlight
On Hono [Db7] lulu [C7] lu [F] Bay
[F] There's something tender in the [F] moonlight
On Hono [Db7] lulu [C7] lu [F] Bay

Swing Strum:



[Dm] And all the beaches are filled with peaches
Who [Am] bring their ukes' a [Am] long
[F] And in the glimmer of the [F] moonlight
They love to [Db7] sing this [C7] song (pause)

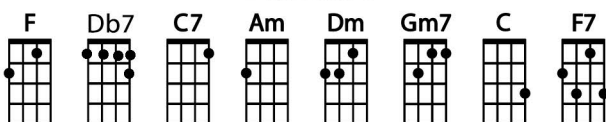
Chorus: If [F] you [Am] like-a [Dm] Ukulele [F] Lady.
[F] Ukulele [Am] Lady like-a [Dm] you [F]
If [Gm7] you [C7] like to [Gm7] linger where it's [C7] shady
[Gm7] Ukulele [C7] Lady linger [F] too
If [F] you [Am] kiss a [Dm] Ukulele [F] Lady
[F] While you promise [Am] ever to be [Dm] true [F]
And [Gm7] she [C7] sees an [Gm7] other Uk[C7]ulele
[Gm7] Lady foolin' a [C7] round with [F] you [F7]

[Bb] Maybe she'll sigh ...(an awful lot)
[F] Maybe she'll cry ...(and maybe not)
[G7] Maybe she'll find somebody else
[C] Bye and [C7] bye

To [F] sing [Am] to [Dm] when it's cool and [F] shady
[F] Where the tricky [Am] Wicki Wackies [Dm] woo [F]
If [Gm7] you [C7] like a [Gm7] Ukulele [C7] Lady
[Gm7] Ukulele [C7] Lady like a [F] you [F]

[F] She used to sing to me by moonlight
[F] On Hono [Db7] lulu [C7] lu [F] Bay
[F] Fond mem'rys cling to me by moonlight
[F] Although I'm [Db7] fa-- [C7] ar a [F] way
[Dm] Some day I'm going, where eyes are glowing
[Am] And lips are made to [F] kiss
[F] To see somebody in the moonlight and
Hear the [Db7] song I [C7] miss (pause)
(Chorus)

Standard



Baritone

